

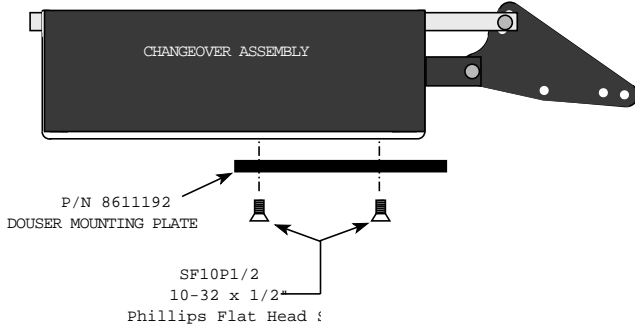


KELMAR

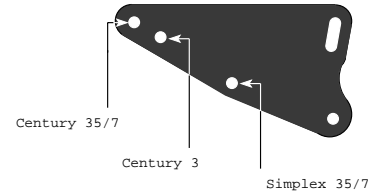
Systems Inc., 284 Broadway, Huntington Station, NY 11746 • 631.421.1230 • FAX 631.421.1274

Electric Changeover Instructions

Basic Assembly Detail

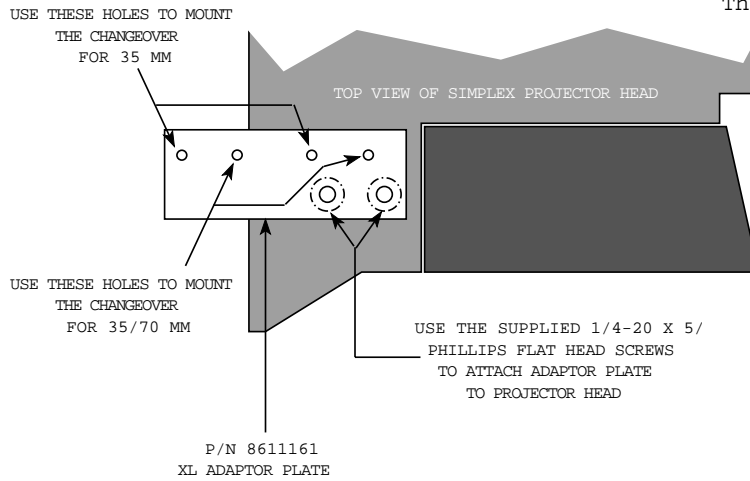


Universal Bell Crank



Use appropriate holes as shown for proper clearance, geometry and douser travel

Mounting Details for ECS35/70



Orientation of XL Douser Link

This End Attaches to Bell



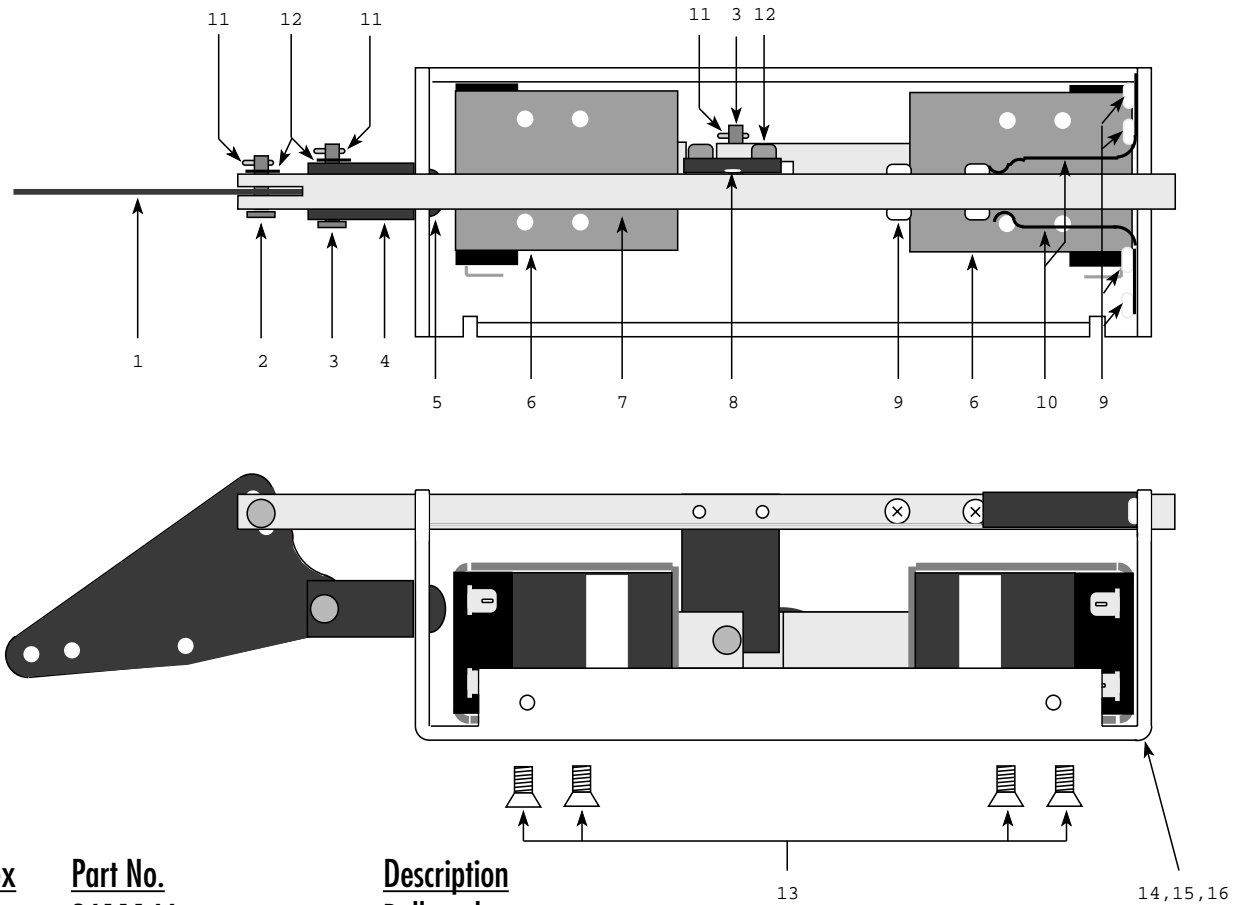
After Inserting into Bell
Secure with
#4 Washer and Cotter Pin

This End Attaches to Douser:

Remove the Old Connector from the Douser
Then Insert this End and Secure with
#4 Washer and Cotter Pin.

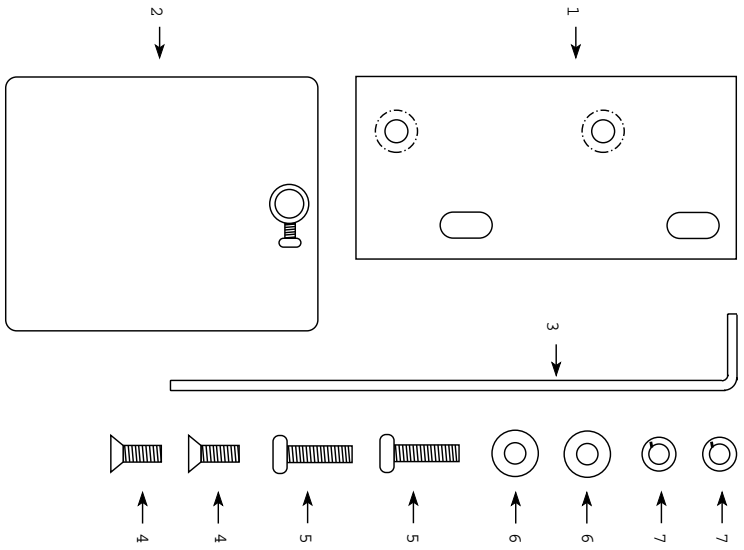
Electrical Connections:

Green	-	Ground
White	-	Common
Black	-	Open
Red	-	Close



<u>Index</u>	<u>Part No.</u>	<u>Description</u>
1	8611146	Bellcrank
2	MS-20392-1C-15	Clevis Pin, .125 Dia (E.L. = .469)
3	MS-20392-1C-17	Clevis Pin, .125 Dia (E.L. = .531)
4	8611145	Pivot, Bellcrank
5	SHBCS10x3/8	Screw, 10-32 x 3/8" Button Head Allen
6	S4-3008	Solenoid, Coil 120 VAC
	S4-3009	Solenoid, Coil 240 VAC
	S4-3016	Solenoid, Coil 24 VAC
7	8611144	Push Rod
8	8611147	Connector
9	SP4P1/8	Screw, 4-40 x .125 Phillips Pan Head
10	8611148	Spring
11	MS-24665-1010	Cotter Pin, .062 Dia
12	SHCS6x3/8	Screw, 6-32 x .375 Socket Head Cap
13	SP8F1/4	Screw, 8-32 x .250 Phillips Flat Head
14	8611190	Chassis
15	8611191	Cover
16	SP6P1/4	Screw, 6-32 x .250 Phillips Pan Head (4)

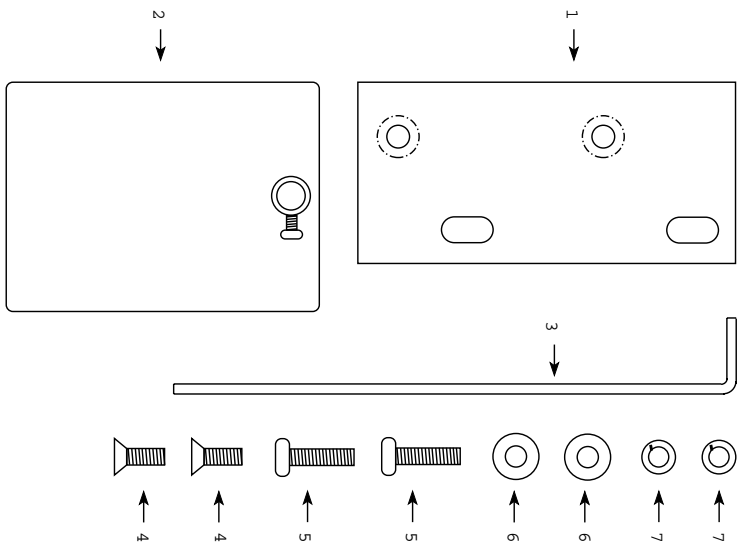
ECC-35/SA & ECC-70 Hardware Kit



Index	Part No.	Description
1	8611192	Changeover Mounting Plate
2	8611193-1	Douser Plate Assembly 35 MM "SA"
3	8611196	Douser Plate Assembly 70 MM "JJ"
4	8611154	Link for Douser Plate 35 MM "SA"
5	8611165	Link for Douser Plate 70 MM "JJ"
6	SFT0P1/2	Screw, 10-32 x 1/2" Phillips Flat Head
7	SP10P5/8	Screw, 10-32 x 5/8" Phillips Pan Head
8	WA10	Washer, #10 Flat
9	WAL10	Washer, #10 Split Lock

Complete Kit
 Part No. Description
 8611141-1 ECC-35/SA Hardware Kit
 8611143 ECC-70 Hardware Kit Includes all of the listed parts

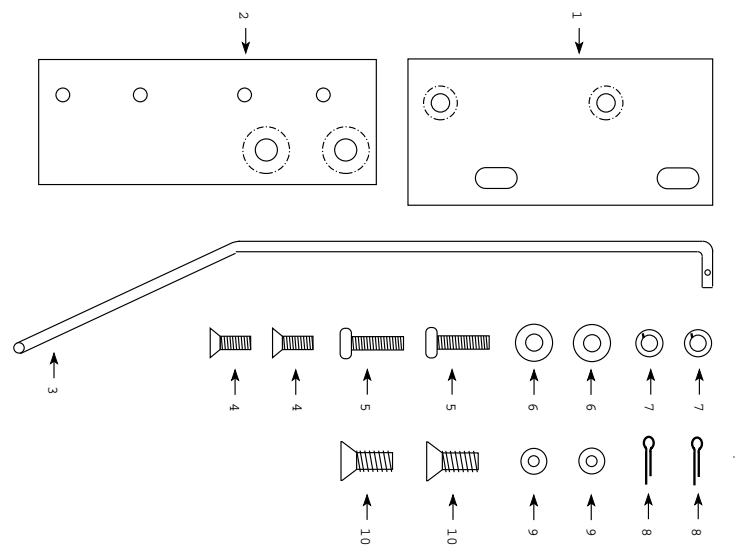
ECC-35/C Hardware Kit



Index	Part No.	Description
1	8611192	Changeover Mounting Plate
2	8611193-2	Douser Plate Assembly 35 MM "C"
3	8611154	Link for Douser Plate 35 MM
4	SFT0P1/2	Screw, 10-32 x 1/2" Phillips Flat Head
5	SP10P5/8	Screw, 10-32 x 5/8" Phillips Pan Head
6	WA10	Washer, #10 Flat
7	WAL10	Washer, #10 Split Lock

Complete Kit
 Part No. Description
 8611141-2 ECC-35/C Hardware Kit Includes all of the listed parts

ECS-35/70 Hardware Kit



Index	Part No.	Description
1	8611192	Changeover Mounting Plate
2	8611161	XL Adaptor Plate
3	8611164	Link for Douser Plate "XL"
4	SFT0P1/2	Screw, 10-32 x 1/2" Phillips Flat Head
5	SP10P5/8	Screw, 10-32 x 5/8" Phillips Pan Head
6	WA10	Washer, #10 Flat
7	WAL10	Washer, #10 Split Lock
8	MS-2465-10	Cotter Pin
9	WAA4	Washer, #4 Flat
10	SF25P5/8	Screw, 1/4-20 x 5/8" Phillips Flat Head

Complete Kit
 Part No. Description
 8611142 ECS-35/70 Hardware Kit Includes all of the listed parts