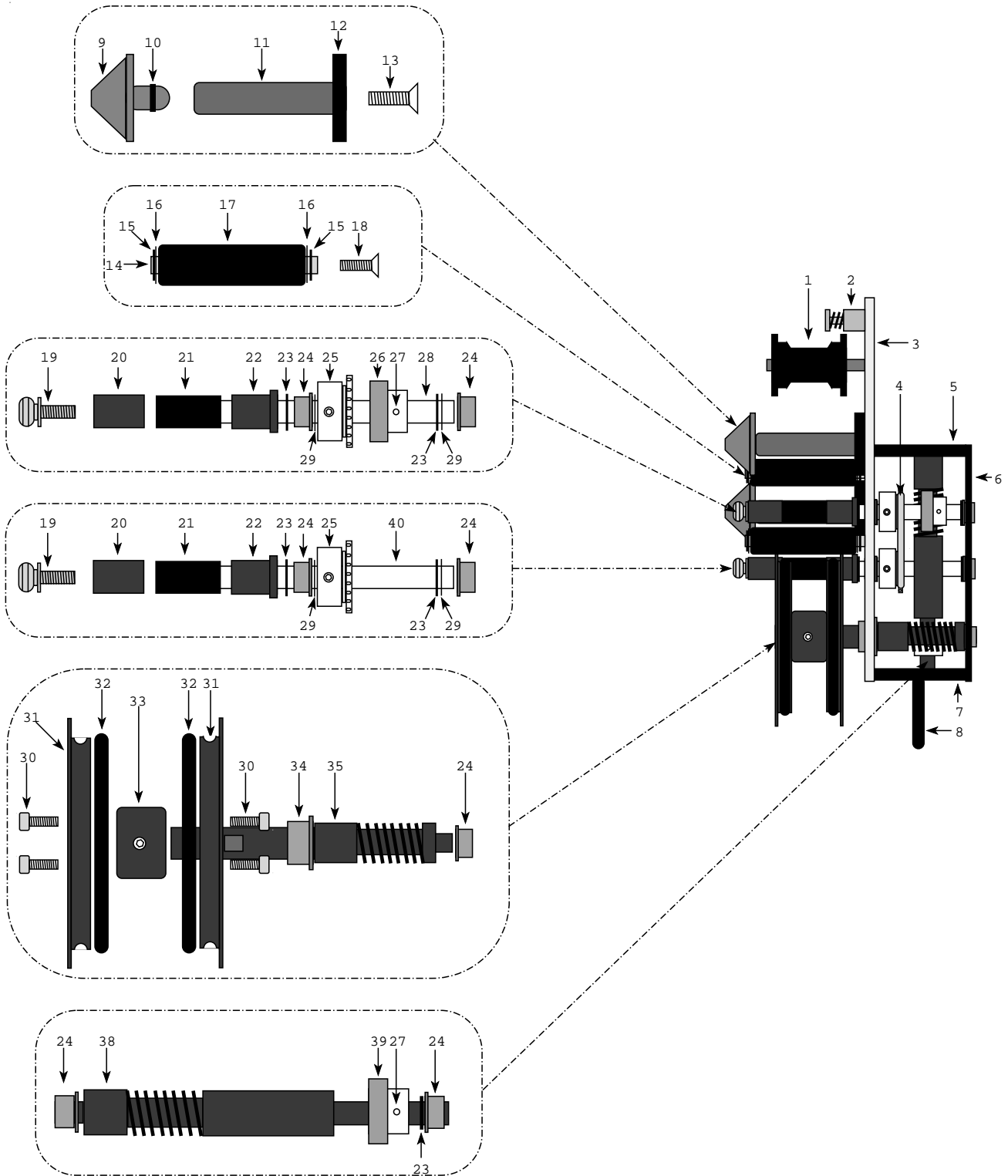
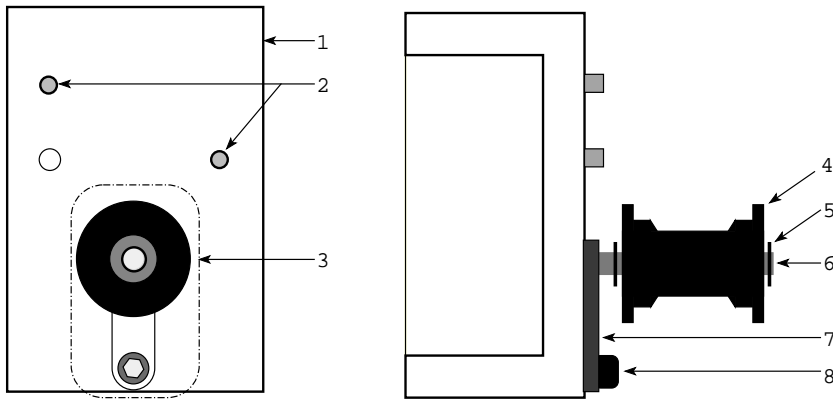


**FC-1 PARTS Diagram and Listing**



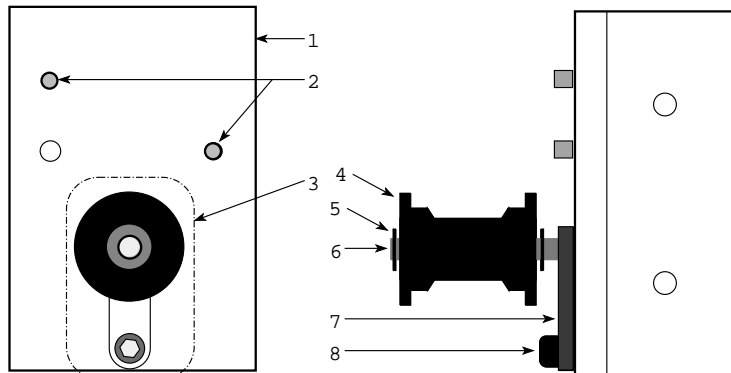
Index	Part No.	Description
1	720336	Roller, Film By-Pass
2	7508253	Screw, Spring Loaded Mounting
3	7508431	Main Plate
4	7508456	Chain, 10" Drive
5	7508434	End Plate
6	7508432	Side Plate
7	7508433	End Plate
8	720465	Handle
9	7508308	Cap, Media Supply Spindle W/ O ring
10	720462	Ring, O, Keeper
11	7508438	Shaft, Media Supply
12	7508248	Flange, Media Supply
13	720348	Screw, Shaft, Media Supply
14	7508242	Shaft, Media Idler Roller
15	720407	Ring, Retaing Media Idler Roller
16	7508249-29	Washer, Precision Shim
17	7508241	Roller, Media Idler
18	720348	Screw
19	7508262	Thumbscrew, Media Take-Up Shaft
20	7508261	Cap, Pressure, Media Take-Up Shaft
21	7508259	Sleeve, Media Take-Up Shaft
22	7508260	Shoulder, Media Supply Spindle
23	720410	Ring, Retaining
24	7508467-1	Bearing, Flanged Sleeve
25	7508455	Sprocket
26	7508444-1	Worm Gear, Media Take-up
27	RPJS	Pin, Spring
28	7508445	Shaft, Media Take-Up, Upper
29	WAPS-S	Washer, Precision Shim
30	720387	Screw
31	7508439	Roller Half, Film Driven
32	7508266	Tire, Drive
33	7508440	Spacer, Film Driven Roller
34	7508467-2	Bearing, Flanged Sleeve, Front, Film Driven
35	7508437	Shaft, Film Driven
24	7508467-1	Bushing, Shaft, Film Driven
24	7508467-1	Bushing, Shaft, Main Drive
38	7508436	Shaft, Jack
39	7508444-2	Worm Gear, Jack Shaft
40	7508443	Shaft, Media Take Up, Lower

### PROJECTOR BRACKET



Index	Part No.	Description
1	7508246	Bracket, Projector
2	720349	Pin, Spring
3	7508273	By-Pass Roller Assembly Complete
4	720336	Roller, Film By-Pass
5	720407	Ring, Retaining (2)
6	7508251	Shaft, Roller
7	7508447	Arm, Roller Mounting
8	720455	Screw, Arm, Roller Mounting

### AUTOWIND BRACKET



Index	Part No.	Description
1	7508264	Bracket, Platter
2	720349	Pin, Spring
3	7508273	By-Pass Roller Assembly Complete
4	720336	Roller, Film By-Pass
5	720407	Ring, Retaining (2)
6	7508251	Shaft, Roller
7	7508447	Arm, Roller Mounting
8	720455	Screw, Arm, Roller Mounting